

# MORTAR TRAY

# WHITNEY

## SECATOL



PALBAC 500 L



PALBAC 1000 L



**Presentation:** The PALBAC is designed to welcome different kind of materials to be handled on a building site. It is mostly used for the transport of mortar or concrete.

**Bucket shape:** The biased front part of the PALBAC eases the loading of materials with a shovel or trowel.

**Means of handling:**

**By crane:** 4 lifting eyes on the upper part to allow its handling and 2 lifting eyes on the lower part to optimize the unloading (for PALBAC 360 and 500L).

**By forklift:** 2 reinforced fork pockets on the lower part. Handling by behind on the PALBAC 360 and 500L and handling by the side on the PALBAC 660 and 1000L.

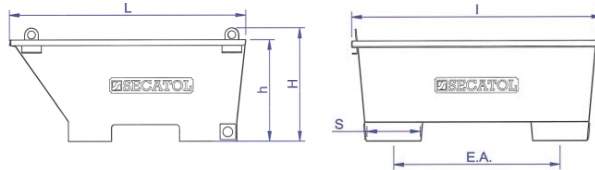
**Storage:** The PALBAC can be stacked.

**Advantages:**

- ✓ QUALITY, manufactured by SECATOL
- ✓ SAFETY, delivered with CE certificate
- ✓ ROBUSTNESS
- ✓ EASY TO UNLOAD



30 PALBAC stacked in a lorry



PALBAC 360 & 500 L can be lifted by lower lifting points in order to optimize the unloading

Designation	Product code	Capacity* (in Litres)	SWL (in Kg)	Weight (in Kg)	Fork pockets size (in mm)		Overall size (in mm)			
					EA	Section S	L	I	H	h
PALBAC 360	06036	360	900	59	845	270x95	1200	1270	445	390
PALBAC 360 heavy duty	06036R	360	900	135	845	270x95	1200	1290	445	390
PALBAC 500	06050	500	1200	68	845	270x95	1200	1270	580	520
PALBAC 500 heavy duty	06050R	500	1200	158	845	270x95	1200	1290	580	520
PALBAC 660	06066	660	1600	98	630	300x95	1229	1403	710	655
PALBAC 1000	06100	1000	2400	145	850	470x95	1958	1152	810	750

	Designation	Product code	Weight (in Kg)	Fork pockets size (in mm)		Overall size (in mm)			
				EA	Section S	L	I	H	Height of the rolls
	Galvanized grating for PALBAC 500	06000050010	36	-	-				
	Tipping system for PALBAC 360 & 500 L	06901	131	813	170x60	1315	1132	-	-
	Drum stand SF1 For 1x 200L drum Fitted with rolls	97301	13	-	-	600	735	500	465
	Drum stand SF2 For 2x 200L drums Fitted with rolls	97302	22	-	-	1200	735	500	465

\*Geometric capacity, apply a coefficient depending on the nature of the concrete to calculate the useful capacity (other capacities on request)  
These technical details are given for information purposes only. they can be changed without any notice.

## WHITNEY

Ladybird House, Brockhill Yard, Hewell Lane, Redditch, B97 6QT  
[www.whitneyeng.com](http://www.whitneyeng.com) [sales@whitneyeng.com](mailto:sales@whitneyeng.com) 01785 282811  
 Sole UK dealers for SECATOL Equipment

PALBAC