

# LAYDOWN CONCRETE SKIP

## with bale arm and centre discharge gate

# WHITNEY

## SECATOL



TIC 1000 L



**Presentation:** This column skip is designed to enable concrete to be poured into narrow shuttering or columns. It is a rollover type skip whereby the skip sits in the horizontal position for filling and reverts to the vertical when in use.

**Means of handling:** This skip is lifted by its bale arm.

**Gate type:** This type of skip can be fitted with all the SECATOL mechanisms. (TU, TI or TE).

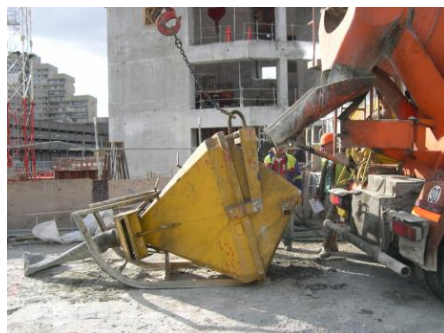
**Discharge type:** Centre

**Gate operation:** By means of a nylon rope attached to a spring return lever for the TI and TU gates and by a wheel for the TE gate.

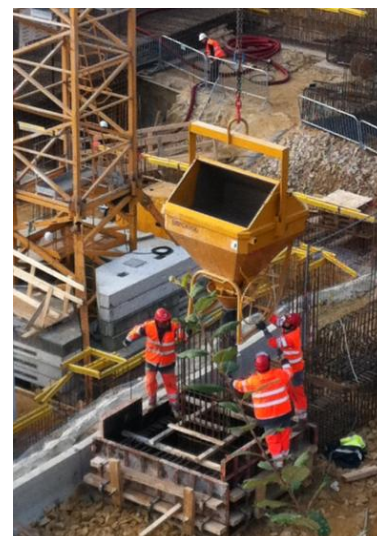
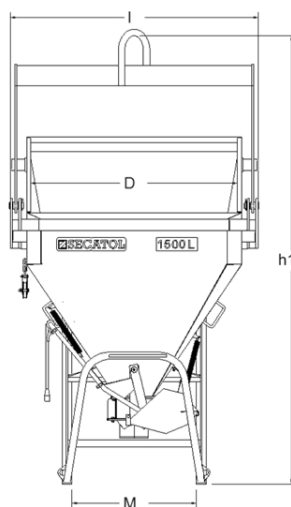
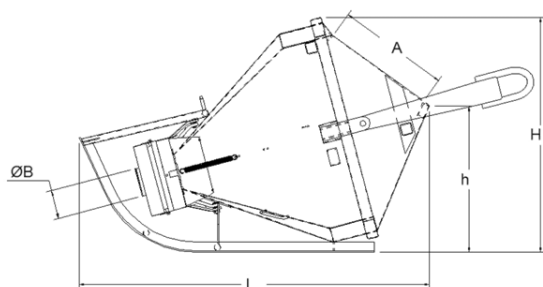
*Skips with capacities of 1000L and above are fitted with the auxiliary gate closing option to ease the gate closure.*

### Characteristics:

- Skip body reinforcing frame made from channel for **greater strength**.
- Delivered with a 3 metre long hose, Ø 200mm (as option Ø 90, 150 or 250 mm available)



Filling of a 1250 L TUC skip



Laydown concrete skip fitted with a TE gate

Capacity* (in litres)	Useful dimensions (in mm)				Overall size (in mm)			TIC		TUC		TEC	
	A	D	H	h1	L	I	H	Product code	Weight (in Kg)	Product code	Weight (in Kg)	Product code	Weight (in Kg)
350	560	1025	700	2000	1610	1245	1100	32035	260	33035	264	48036	212
500	560	1025	745	2145	1745	1245	1145	32050	275	33050	280	48053	228
600	600	1140	830	2410	1910	1450	1280	32060	330	33060	334	48063	271
800	600	1140	860	2545	2045	1450	1325	32080	344	33080	352	48083	281
1000	600	1140	890	2685	2175	1450	1360	32100	350	33100	364	48103	297
1250	775	1470	1025	2870	2355	1755	1615	32125	566	33125	578	48126	403
1500	775	1470	1050	2970	2450	1755	1640	32150	586	33150	598	48153	521
2000	775	1470	1100	3170	2640	1755	1690	32200	680	33200	686	48203	526
2500	784	1449	1171	3632	2882	1755	1793	32250	720	33250	725	48253	552
3000	878	1700	1283	3862	2876	2155	2090	32300	1170	33300	1176	48303	936
3500	878	1700	1324	4018	3027	2155	2090	32350	1250	33350	1256	48353	1016

\*Geometric capacity, apply a coefficient depending on the nature of the concrete to calculate the useful capacity (other capacities on request)  
These technical details are given for information purposes only, they can be changed without any notice.

# WHITNEY

Ladybird House, Brockhill Yard, Hewell Lane, Redditch, B97 6QT  
[www.whitneyeng.com](http://www.whitneyeng.com) [sales@whitneyeng.com](mailto:sales@whitneyeng.com) 01785 282811  
 Sole UK dealers for SECATOL Equipment

TIC  
TUC  
TEC